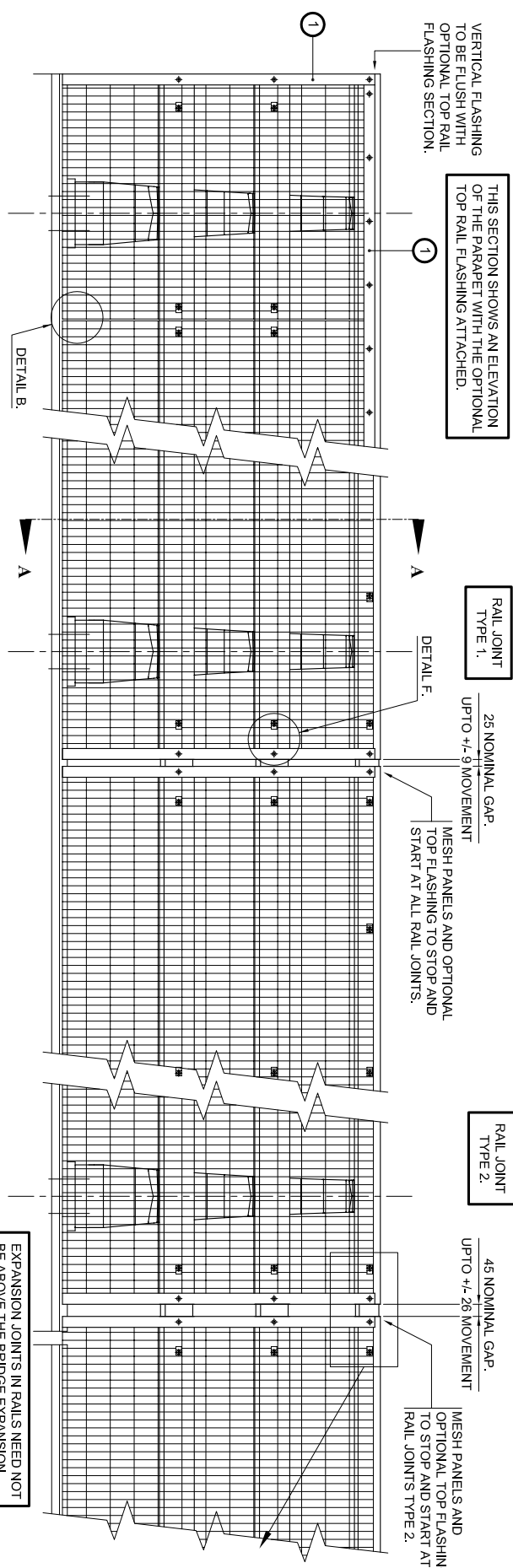


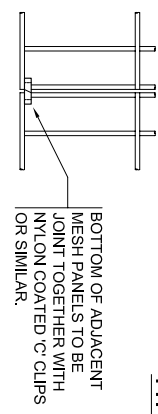
THIS SECTION SHOWS AN ELEVATION OF THE PARAPET WITH THE OPTIONAL FLASHING ATTACHED.



TYPICAL ELEVATION ON VGAN 302 PARAPET SHOWING MESHING DETAILS.

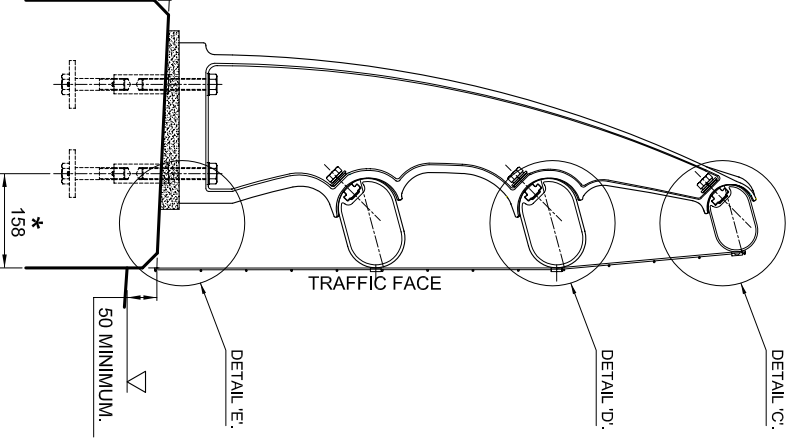
SPECIAL FIXING NOTE:

- ANY MESH FIXING WITHIN THE 380mm LENGTH OF THE RAIL END TO BE FIXED WITH THE FOLLOWING:
 - MESH CLIPS - M5x8mm LONG DOMED SOCKET HEAD STAINLESS STEEL SETSCREWS GRADE A2
 - OPTIONAL TOP FLASHING - M5x12mm LONG DOMED SOCKET HEAD STAINLESS STEEL SETSCREWS GRADE A2
 - VERTICAL END FLASHING - STAINLESS STEEL DOMED SOCKET HEAD SETSCREWS GRADE A2, M5x12mm LONG FOR TOP RAIL FIXING AND M5x16mm LONG FOR LOWER TWO MAIN RAIL FIXINGS.
 - AT ALL OTHER LOCATIONS THE APPROPRIATE DRIVE RIVETS ARE TO BE UTILISED.



DETAIL B:
ELEVATION ON 'C' CLIP.

VGAN 302.



SECTION A-A FOR VGAN 302 PARAPET.

RAIL JOINT TYPE 1.

25 NOMINAL GAP.

RAIL JOINT TYPE 2.

45 NOMINAL GAP.

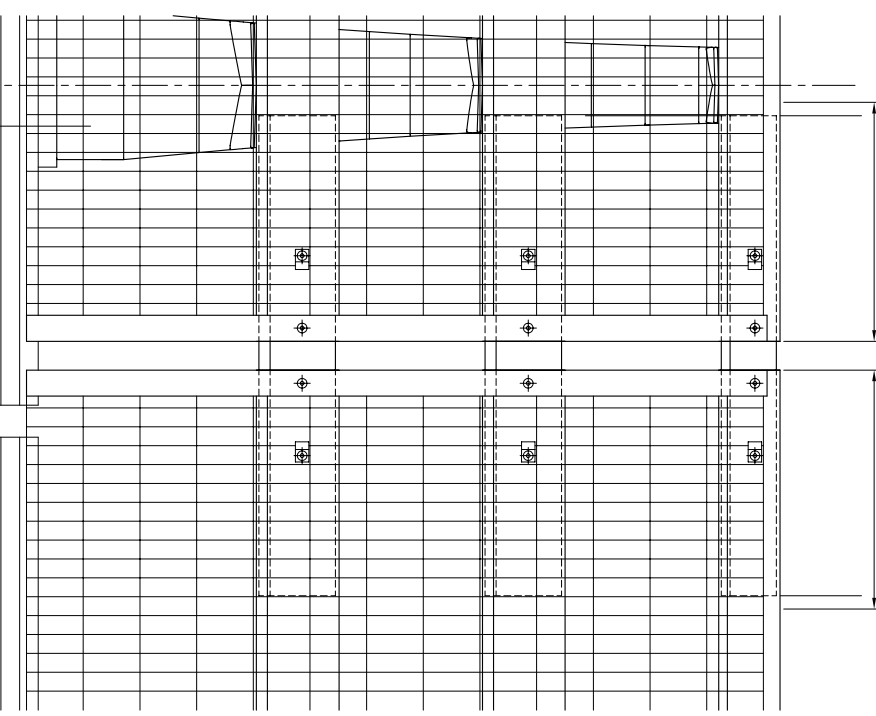
EXPANSION JOINTS IN RAILS NEED NOT BE ABOVE THE BRIDGE EXPANSION JOINT BUT MUST OCCUR IN THE PANEL SPANNING THE BRIDGE JOINT.

SYSTEM	REQUIREMENTS	NOTES
VGAN 302.	HALF CLIP MESHING SYSTEM.	TOP RAIL CLIPS ARE TO BE SPACED AT MAXIMUM LONGITUDINAL CENTRES OF 450mm. MIDDLE AND BOTTOM RAIL CLIPS TO BE SPACED AT MAXIMUM LONGITUDINAL CENTRES OF 915mm.
VGAN 302.	11No. PER 1.830m PANEL.	3.0m LONG TOP RAIL FLASHING STRIP TO HAVE FIXINGS SPACED AT MAXIMUM LONGITUDINAL CENTRES OF 203mm. MIDDLE AND BOTTOM RAIL CLIPS TO BE SPACED AT MAXIMUM LONGITUDINAL CENTRES OF 915mm.
VGAN 302.	6No. PER 1.830m PANEL.	OPTIONAL TOP FLASHING MESHING SYSTEM.

RAIL TO RAIL JOINT

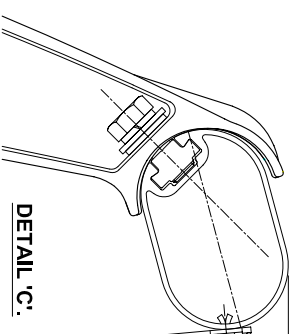
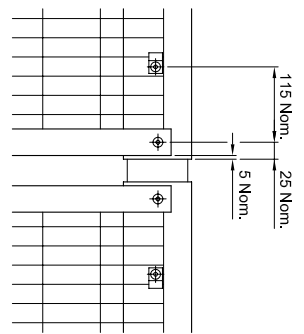
380

380



ENLARGED VIEW AT RAIL TO RAIL JOINTS.

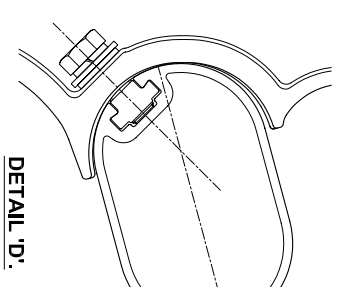
ENLARGED VIEW SHOWING NOMINAL FIXING LOCATIONS.



VARIABLE TO SUIT MAXIMUM 25mm GAP AT BOTTOM.
HALF CLIPS TO TOP RAIL TO BE SPACED AT 450mm MAXIMUM CENTRES.

76.2 x 25.4 x 3mm THICK WELDMESH PANELS.
VGAN 302 - 1830 x 992.

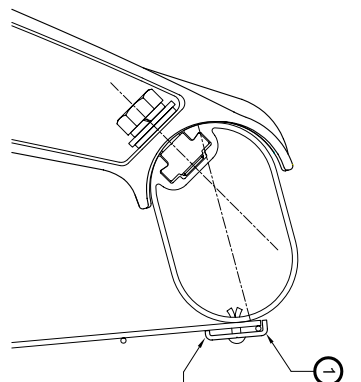
ALUMINIUM MESH HALF CLIP FIXED AT 915mm MAXIMUM CENTRES WITH 1No. MASTERFIX DRIVE RIVET PER CLIP (CODE: R1803-4809). EXCLUDING THE END OF RAIL SECTION.



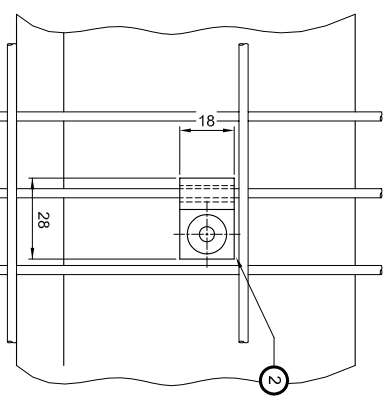
DETAIL D:



DETAIL E:



OPTIONAL DETAIL C:



DETAIL F:

ELEVATION ON MESH HALF CLIP.

MATERIAL SPECIFICATION.

ITEM	SPECIFICATION	ITEM	SPECIFICATION
TOP FLASHING AND MESH CLIPS.	ALL EXTRUSIONS ARE TO BE ALUMINIUM ALLOY EN AW6082 T6.	RIVETS.	ALL RIVETS TO BE ALUMINIUM MASTERFIX DRIVE RIVETS CODE: R1803-4816 OR R1803-4809 OR SIMILAR APPROVED.
WELDMESH PANELS.	STANDARD WELDMESH PANELS WITH 76.2 x 25.4 CENTRES x 3.0mm THICK WIRE TO ONE OF THE FOLLOWING SPECIFICATIONS: 1) CARBON STEEL WIRE HOT DIPPED GALVANISED TO BS EN ISO 1461 OR BY AN ALTERNATIVE METHOD SPECIFIED BY THE ENGINEER. 2) STAINLESS STEEL WIRE TO GRADE 304S31, 316S31 OR TO AN ALTERNATIVE SPECIFIED BY THE ENGINEER.	SET SCREWS.	M5x8mm, 12mm AND 16mm LONG DOMED SOCKET HEAD SET SCREWS TO BE STAINLESS STEEL GRADE A2 OR SIMILAR APPROVED.

SECTION SCHEDULE	
1	TOP FLASHING SECTION 113790.
2	MESH HALF CLIP SECTION 113788.

SCALE	DATE	DATE
P.G.H.	CHK.	D.V.C.
2004/2008		

TITLE
STANDARD ARRANGEMENT DRAWINGS
OF VGAN 300 SERIES ALUMINIUM
PARAPET SYSTEM.
PARAPET MESHING DETAILS.

DRAWING NUMBER
VGAN 300 - 04.

V&G
Varley and Gulliver Ltd.
Alfred Street, Sparkbrook,
Birmingham B12 8JK
Tel. 44 (0) 121 773 2441
Fax. 44 (0) 121 766 6875
Website: www.v-and-g.co.uk

THIS DRAWING TO BE USED ONLY WITH
W/O.No.
DRAWING TO BE RETURNED TO DRAWING
OFFICE ON COMPLETION OF WORK.

ALL STANDARDS QUOTED ARE
DEEMED CURRENT AT THE DATE
THE DRAWING IS ISSUED FOR
APPROVAL, UNLESS OTHERWISE
STATED.

NOTE: ALL ACCUMULATIVE
TOLERANCES ARE TO BE
CONTAINED WITHIN THE OVERALL
TOLERANCE.

SITE ERECTION
TOLERANCES.
WILL VARY TO SUIT SITE
CONDITIONS.

MANUFACTURING
TOLERANCES AS SHOWN
UNLESS STATED OTHERWISE.

TOLERANCES:
DIMENSIONS: ± 2mm
GREATER THAN 1000mm.
LESS THAN 1000mm. ± 1mm
ANGULAR DIMENSIONS: ± 0°15'

Rev/ Date By Description