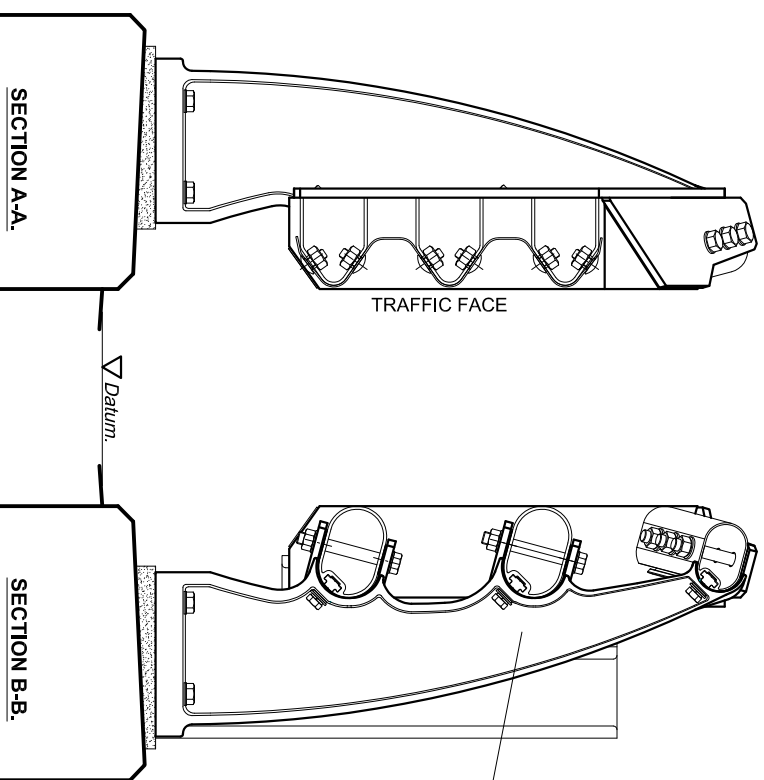


FIXINGS FOR CONNECTION OF THREE BEAM GUARDRAIL TO GUARDRAIL CONNECTOR PLATE TO BE SUPPLIED BY SAFETY FENCE CONTRACTOR.

GUARDRAIL CONNECTOR PLATE AND FIXINGS FOR CONNECTION TO THE ALUMINIUM PARAPET ARE TO BE SUPPLIED BY THE PARAPET SUPPLIER.

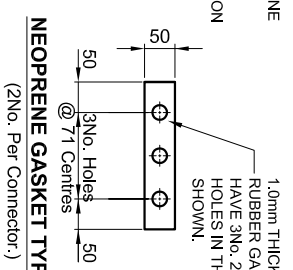
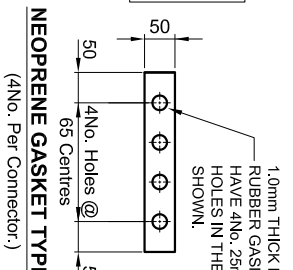


NOTES:

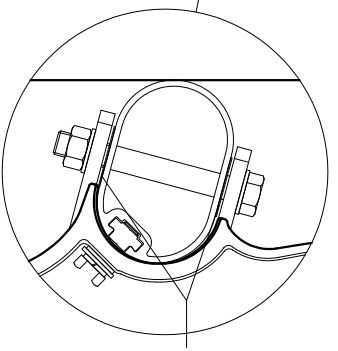
- SHS SECTIONS TO BE GRADE S355JO TO BS.EN.10210. FLAT SECTIONS TO BE GRADE S355JO TO BS.EN.10025.
- M20 BOLTS TO BE GRADE 8.8 TO BS.ENISO.4014, M20 HEX NUTS TO BE GRADE 10 TO BS.ENISO.4032 AND M20 WASHERS TO BE FORM 'E' TO BS.4320.
- GUARDRAIL CONNECTOR TO BE WELDED IN ACCORDANCE WITH BS.EN.1011-1 AND BS.EN.1011-2.

THREE BEAM COMPONENTS TO BE SUPPLIED AND FITTED BY OTHERS.

IMPORTANT.
SET OUT OF STEEL GUARDRAIL, APPROACH AND DEPARTURES TO A BRIDGE PARAPET ARE TO BE AS STANDARD STATE DETAILS.

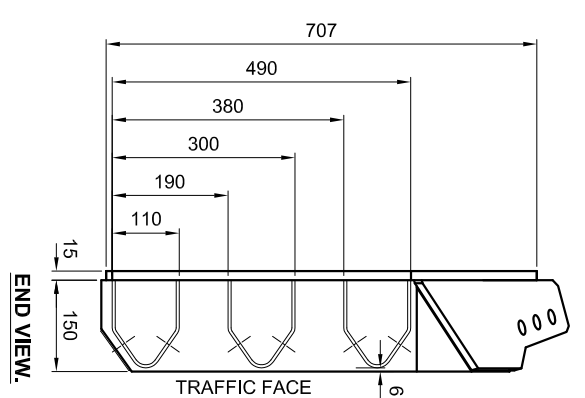


SAFETY FENCE CONNECTOR TO BE GALVANISED TO BS.ENISO.1461 AFTER FABRICATION.

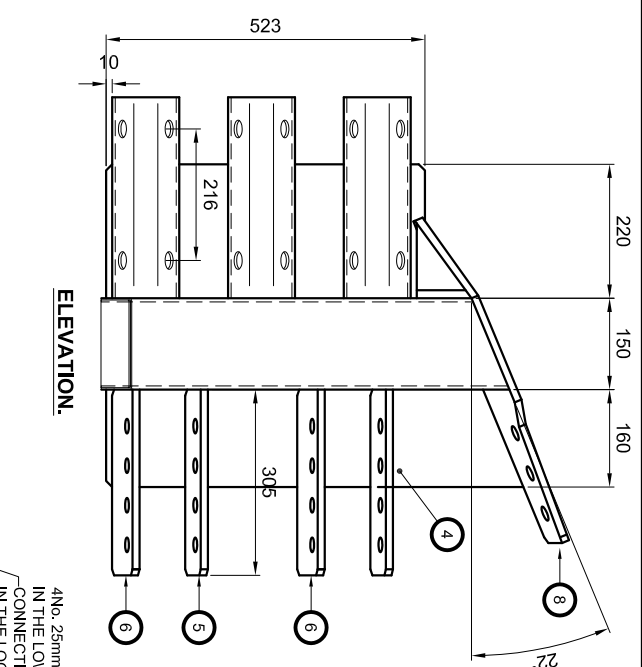


NEOPRENE RUBBER GASKETS TO BE PLACED BETWEEN THE ALUMINIUM RAILS AND THE GALVANISED STEEL GUARDRAIL CONNECTING PLATES.

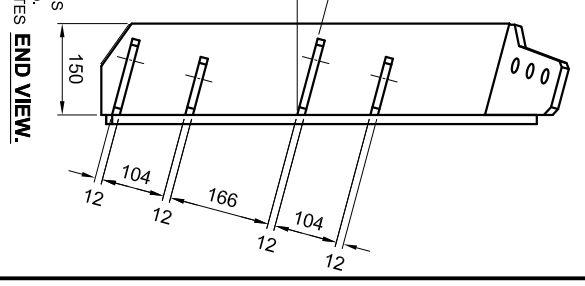
GUARDRAIL CONNECTOR ATTACHED TO THE VGAN 300 SERIES ALUMINIUM PARAPET SYSTEM WITH M20 x 120 (TOP RAIL) AND 160 LONG HEXAGONAL HEAD GALVANISED STEEL BOLTS c/w 1No. M20 HEXAGONAL NUT AND 2No. FORM 'E' FLAT WASHERS TIGHTENED TO A TORQUE BETWEEN 100 AND 120 Nm.



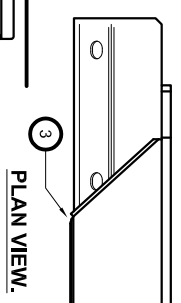
END VIEW.



ELEVATION.

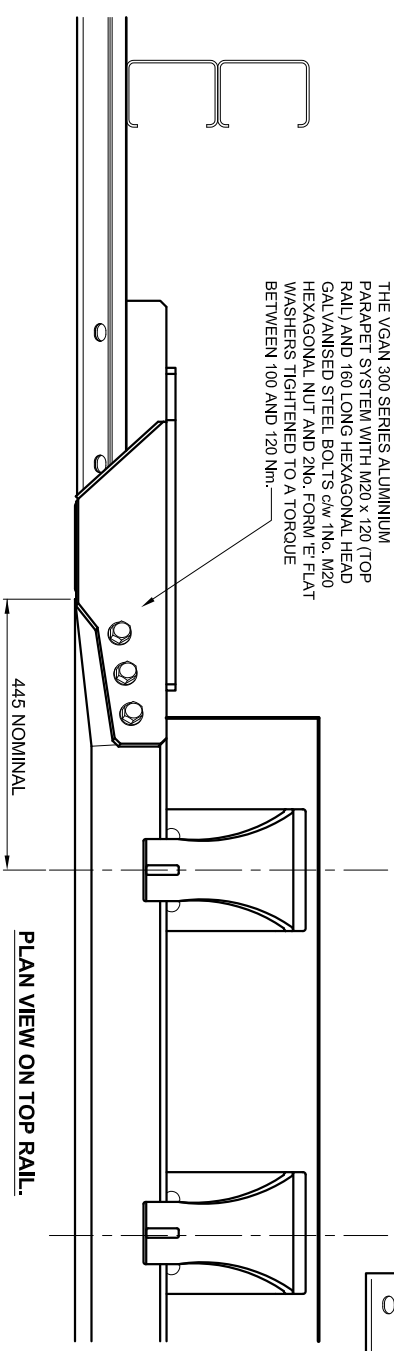


END VIEW.

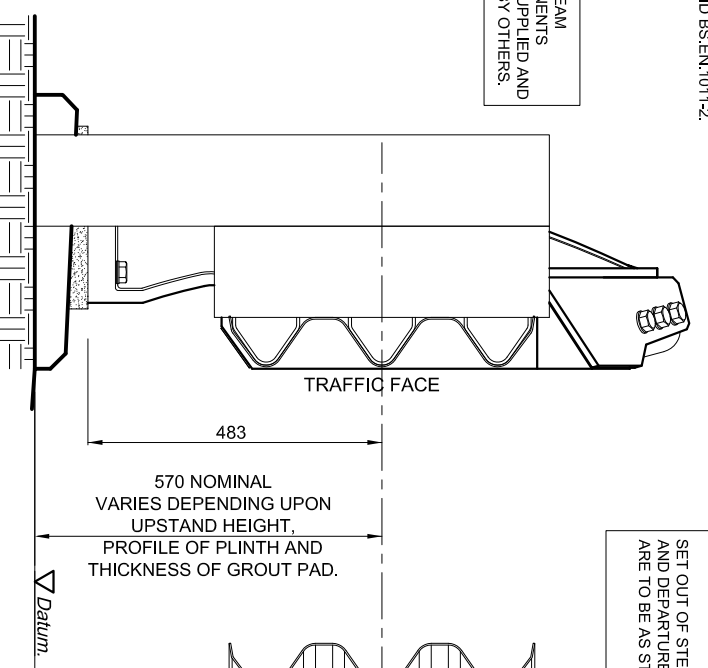


PLAN VIEW.

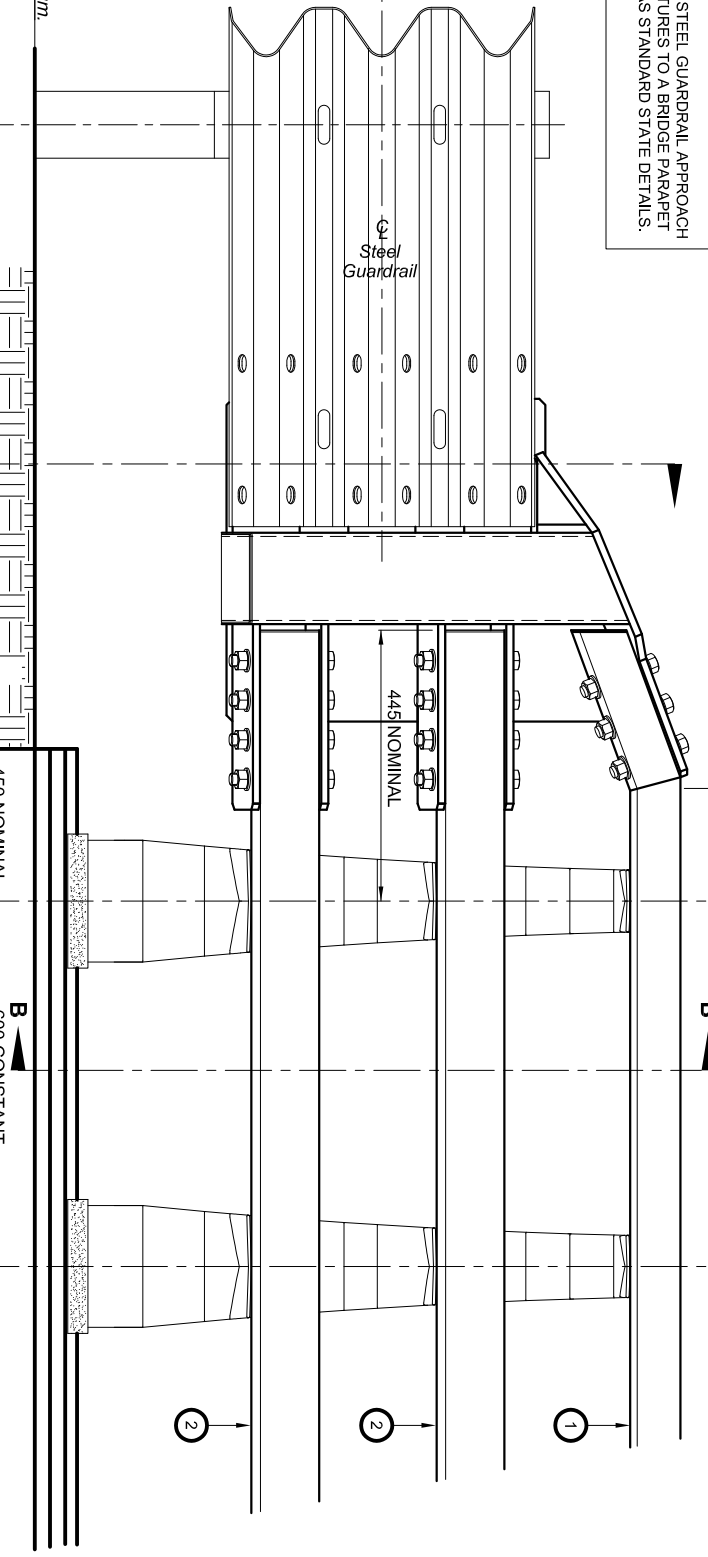
CONNECTING PLATE DETAILS.
(APPROACH CONNECTOR SHOWN, DEPARTURE CONNECTOR SIMILAR BUT HANDED.)



PLAN VIEW ON TOP RAIL.



END ELEVATION OF SAFETY FENCE CONNECTION.



ELEVATION OF SAFETY FENCE CONNECTION.

Rev	Date	By	Description

NO.	DESCRIPTION	MANUFACTURING TOLERANCES.	MANUFACTURING TOLERANCES.
1	TOP RAIL SECTION 110934	± 2mm	± 2mm
2	MAIN RAIL SECTION 110931	± 1mm	± 1mm
3	VERTICAL CONNECTOR SECTION 1507/5096 RHS	± 2mm	± 2mm
4	CONNECTOR BAKING PLATE SECTION 7696/50415	± 0.15°	± 0.15°
5	CONNECTING PLATES 100x12 FLAT	± 2mm	± 2mm
6	CONNECTING PLATES 130x12 FLAT	± 2mm	± 2mm
7	CONNECTING PLATES 110x12 FLAT	± 2mm	± 2mm
8	SHAPED CONNECTING PLATES 145x12 FLAT	± 2mm	± 2mm

SCALE	DATE	DRN.	P.G.H.	CHK.	D.V.C.
	05/08/2012				

Varley and Gulliver Ltd.
Ridgacre Road West Bromwich B71 1BB
Tel. 44 (0) 121 773 2441
Fax. 44 (0) 121 766 6875
Website. www.v-and-g.co.uk

TITLE: STANDARD ARRANGEMENT DRAWINGS OF VGAN 300 SERIES ALUMINIUM PARAPET SYSTEM. CONNECTION TO THREE BEAM GUARDRAIL.

DRAWING NUMBER: VGAN 300 (AP) - 05.